

SPECIAL
Before
& After
ISSUE

UtahStyle

Remarkable Remodels

VISIT

Mike Upwall
at home

DECORATE

Fresh sheer
fabrics

GROW

Lush hanging
baskets

utahstyleanddesign.com

DESIGNER SECRETS LOCAL SOURCES
EXPERT TIPS & MORE!



0 74470191829 5
Display Until June 30, 2014 \$4.95 U.S.
Spring 2014 utahstyleanddesign.com



CHANGES MADE

Replaced heavy, stained molding with simple white baseboards and casing that don't detract from the views

Replaced damaged engineered wood floors with 7-inch wide white oak planks

Painted yellow-tinted walls with Benjamin Moore's fresh Dove White

Created unobstructed passageway down the room's center for improved traffic flow

Selected modestly sized furniture that doesn't obstruct mountain views or the room's openness

Great Room Redux

A contemporary décor and finessed floor plan bring fresh style and livability to a Park City townhouse.

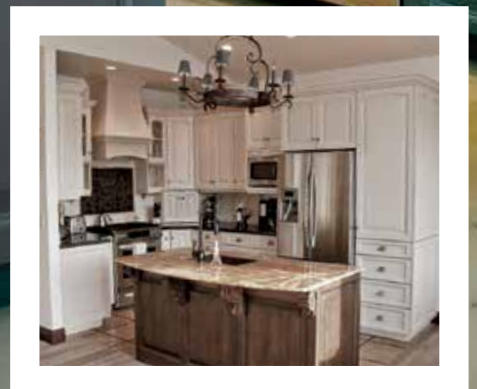
BY BRAD MEE PHOTOS BY SCOT ZIMMERMAN

When homeowner and avid mountain biker Tom Stoltman purchased a two-story townhouse in Park City's Trout Creek community, he was understandably hot on the nearby Spring Creek trailhead and the preserved wetlands adjoining the property. The home's ornate Mediterranean style décor, however, left him cold. He imagined something more modern for the compact, 1,600 square-foot interior. Enter designer Jenny Samuelson who worked with Stoltman to transform the home with clean-lined style and a floor plan making the small interior live very big.



CHANGES MADE

- Replaced the sculpted plaster range hood with a clean-lined stainless hood
- Replaced fussy trim piece near the ceiling with a flat molding featuring a mitered edge
- Placed doors over upper cabinet boxes that previously served as plate racks
- Swapped out old arched upper cabinet doors with square-paneled versions that match the existing bottom cabinet doors
- Substituted simply styled under-counter corbels for the island's heavily carved pieces
- Removed ornate chandelier and installed Harman pendants from Restoration Hardware
- Refinished yellow-glazed cabinets with a deep gray Farrow & Ball paint





CHANGES MADE

Swapped old bronze sink with a stainless, single-basin model with a front apron

Removed countertop appliance garages and installed a white glass tile backsplash

Replaced black and orange stone countertops with white Caesarstone

“We talked a lot about style and narrowed down Tom’s aesthetic to contemporary with a mid-century edge,” Samuelson says. “Over and over again, it came back to simple lines and a masculine vibe.” To create these, the designer ditched existing Old World elements including gilded detailing, faux finishes, arched door carvings and a medallion in the warped wood flooring. “It was over the top and didn’t feel right for Park City,” she says. While the heavy details dated the entire interior, Samuelson concentrated much of her efforts on the upper level great room where Stoltzman spends much of his time relaxing and entertaining friends.

While transforming the open great room, Samuelson focused on creating a stylish space that felt comfortable and lived-in. “Even though Tom was buying his furniture all at once, we didn’t want it to appear that way,” she says. The designer and client scoured spots including Restoration Hardware and Salt Lake’s Mod a-go-go as well as sites like One Kings Lane and Room & Board to find the perfect complementary but unmatched pieces. The duo also enlisted designer



CHANGES MADE

Removed ornate fireplace surround and mantel and replaced with it a streamlined custom version painted gray

Painted existing built-ins white and detailed them with silver grates and new hardware

Chose a boxy, to-the-floor coffee table to anchor the airy conversation area

Ensured identical wood finishes and seat heights for the unmatched sofa and lounge chairs to foster a cohesive design

Positioned a modern bar cart in the corner to create an additional activity zone

Used solid fabrics and an unpatterned rug to create a spacious feel



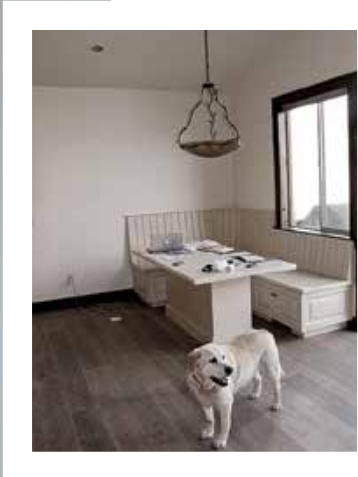
CHANGES MADE

Replaced multi-tiered iron chandelier with simple Arteriors fixture

Replaced heavy, dark wall cap and molding with white streamlined versions

Disguised large vent while creating a game table zone using customized furnishings from Room & Board





CHANGES MADE

Lowered seat back to be flush with the window bottom

Upholstered existing beadboard back with hardwearing chenille fabric and added matching seat cushions

Painted the built-in benches to match the walls and to make the new table, chairs and upholstery stand out

Replaced iron chandelier with modern Restoration Hardware fixture

Hung a vintage print to reflect the homeowner's cycling passion



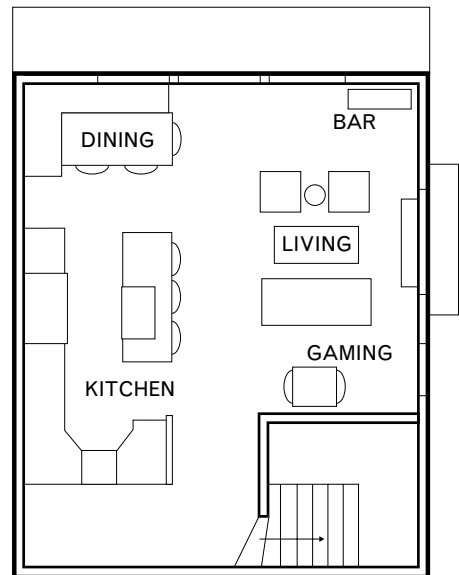
FIREPLACE
WHALE GRAY
2134-40
BENJAMIN MOORE



WALLS
WHITE DOVE
OC-17
BENJAMIN MOORE



KITCHEN CABINETS
DOWN PIPE
NO. 26
FARROW & BALL



Samuelson's floor plan identifies the great room's multiple living zones and illustrates the unobstructed path down its center.

Steve Norr of Peppertree Kitchen & Bath to swap out the kitchen's outdated, arched upper cabinet doors with square-paneled replacements. "Changing upper doors is great way to make a big impact on a limited budget," says Norr, noting the approach also avoids disturbing existing countertops. A deep gray cabinet finish, white Caesarstone countertops, glass tile backsplash, contemporary lighting and a stainless hood are among the new elements used to update the kitchen and integrate it into the great room's modern design.

Samuelson didn't stop with the finishes and furnishings; she reworked the room's flow as well. "The room is really narrow, so I created an imaginary line running from the top of the stairs to the window at the end of the space. No furniture could cross the line and become an obstacle," says the designer, who also divided the open space into defined living zones that flow seamlessly into one another. By choosing modestly scaled furniture, creating a calm palette, and keeping the design cohesive and uncluttered throughout, Samuelson not only gave the great room a big style change, but also made it look and live much larger than it actually is. **USD**